

## ■ PRO ELITE™ BBC 24-DEGREE CNC-PORTED ALUMINUM CYLINDER HEADS

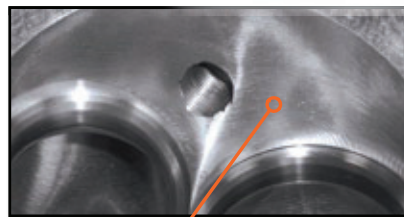
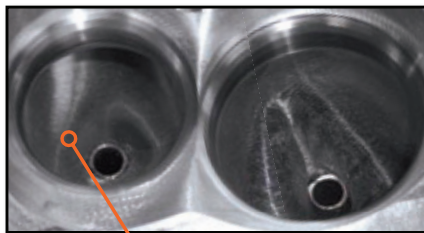
Increased airflow and efficiency are most essential for those drag racing and marine applications looking for the biggest possible gains in horsepower and torque. Cylinder head engineers at RHS™ have designed a Big Block Chevy 24-degree CNC-ported cylinder head to maximize airflow and assure port-to-port consistency in runner shapes and sizes.

These BBC 24-degree aluminum heads feature multi-angle intake and radiused exhaust valve seats for up to 5% more airflow and increased horsepower. The thick deck surface of these precision-machined heads allows them to be angle milled and provides increased rigidity to improve head gasket retention in boosted and nitrous applications. The best features, however, are the CNC-ported intake and exhaust runners for optimal air volume, atomization and velocity.

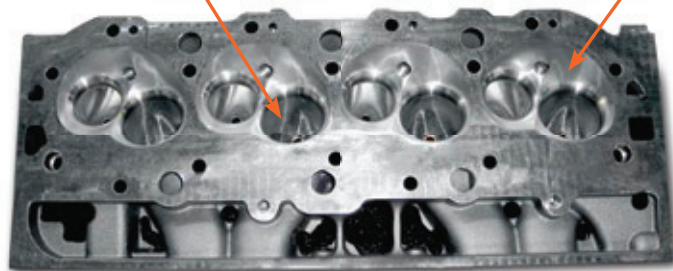
The RHS™ BBC 24-Degree CNC-Ported Aluminum Cylinder Heads are available with either a 339cc or 376cc runner volume and a 121cc combustion chamber and are designed using the RHS™ exclusive Clean Cast™ Technology to deliver superior port-to-chamber transitions for greater airflow. In addition, these heads feature a refined water jacket for more even water flow, which reduces hot spots in both the cylinder heads and the engine.



CNC-ported bowl area



CNC-ported combustion chamber



- BBC 24-degree aluminum cylinder heads for drag & marine racing applications
- Multi-angle & radiused exhaust seats for superior flow & increased horsepower
- Thick deck surface allows angle milling & increased rigidity; improves head gasket retention
- CNC-ported 376cc or 339cc intake; 135cc exhaust runners; 121cc chamber volume

PART #	DESCRIPTION	VALVE TRAIN TYPE	VALVE SIZE	APPLICATION
<b>Aluminum (121cc Ported Chamber) - Ready To Assemble</b>				
11034	BBC 24° CNC-Ported - 339cc, Straight Plug	Solid Roller	2.250"/1.880" +.250" Long	468-540c.i.
11038	BBC 24° CNC-Ported - 376cc, Straight Plug	Solid Roller	2.300"/1.880" +.250" Long	540-632c.i.