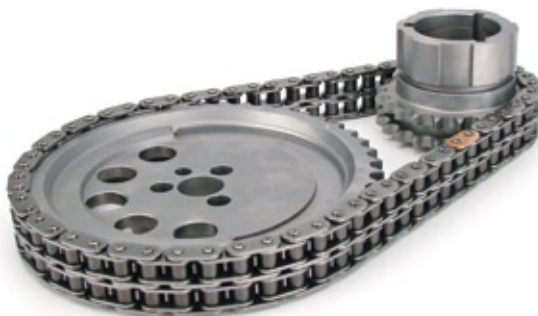
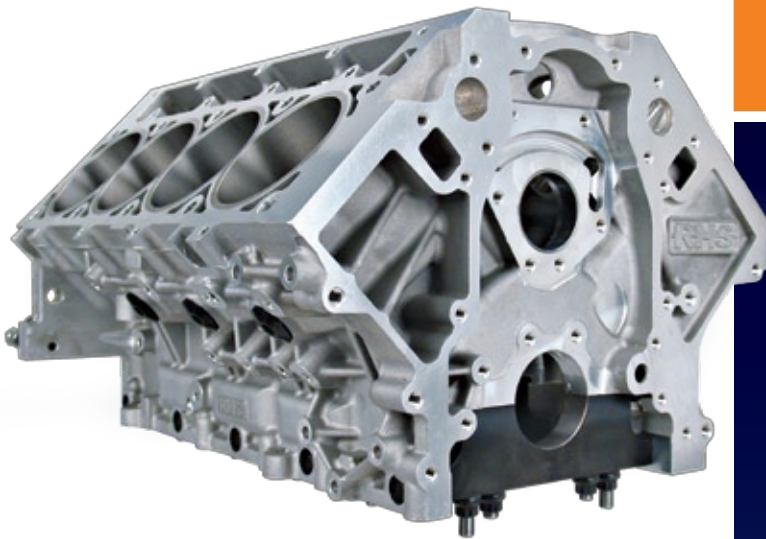
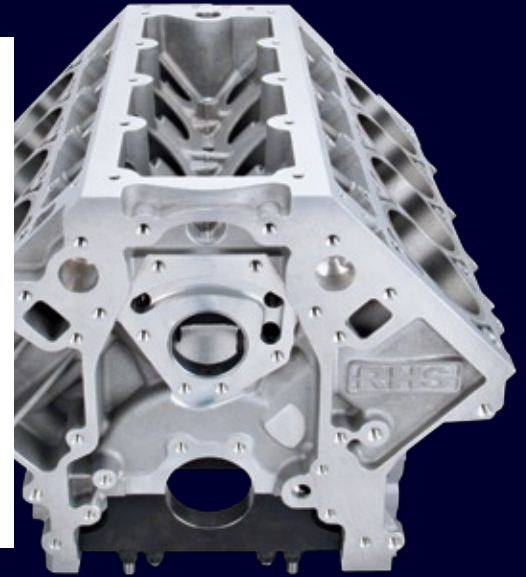


APPLICATION CHART

Part #	Description	Deck Height	Bore Width	Cylinder Sleeve Length
FINISHED HONED				
54900	LS Aluminum Race Block	Tall (9.750")	4.165"	6.38"
54901	LS Aluminum Race Block	Tall (9.750")	4.125"	6.38"
54902	LS Aluminum Race Block	Standard (9.240")	4.165"	5.87"
54903	LS Aluminum Race Block	Standard (9.240")	4.125"	5.87"
BORED, READY TO HONE				
54900U	LS Aluminum Race Block	Tall (9.750")	4.160"	6.38"
54901U	LS Aluminum Race Block	Tall (9.750")	4.120"	6.38"
54902U	LS Aluminum Race Block	Standard (9.240")	4.160"	5.87"
54903U	LS Aluminum Race Block	Standard (9.240")	4.120"	5.87"
UNFINISHED				
54904	LS Aluminum Race Block	Tall (9.760")	4.100"	6.38"
54905	LS Aluminum Race Block	Standard (9.250")	4.100"	5.87"

* Unfinished blocks feature a .010" thicker deck and .005" smaller bore size for custom machining operations.



NEED A ROTATING ASSEMBLY?

Our RACING HEAD HELP™ line can give you the ideal bottom-end solution for your LS Race Block application.

Custom options such as oversized cam journals & super tall decks height are also available.

Call for details & lead time.

SERVICE ITEMS

APPLICATION CHART

Part #	Description
HARD PARTS	
3154	Timing Chain Set*
3173KT	Adjustable Timing Chain Set*
549100-1	8620 Billet Main Cap*
549101	Rear Seal Cover*
549102	Brass Cam Thrust Plate 6 Bolts*
549103-1	4.125" Short Deck Sleeve
549104-1	4.125" Tall Deck Sleeve
549105-1	3.900" Short Deck Sleeve
FASTENERS	
549300-1	Main Cap Stud, Long
549301-1	Main Cap Stud, Short
549302-1	Main Cap Side Bolt
549303-1	Main Cap 12pt Nut
549304-1	Main Cap Washer
549305-1	Main Cap Side Washer
HARDWARE	
549200-1	Aluminum -12AN Port Plug
549201-1	Main Cap Dowel Pin
549202-1	Cam Bearings
549203-1	O-Ring For -12 Port Plug
549204-1	O-Ring For Thrust Plate
549205-1	Block-To-Transmission Dowel Pin
ENGINE BLOCK TOOLS	
549106	LS Engine Main Cap Puller
INTAKE SPACER KITS	
549107	LS1 Intake Spacer Kit
549108	LS3 Intake Spacer Kit
549109	LS7 Intake Spacer Kit

* Required For RHS® Block Applications