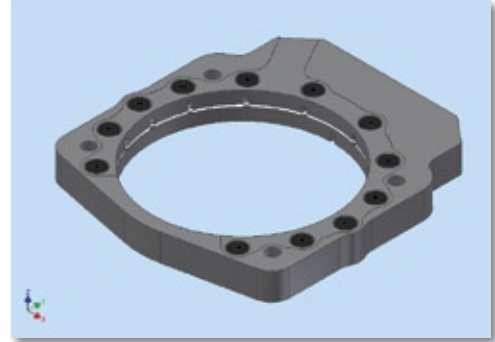




LSX PERIMETER PLATE NITROUS SYSTEM

Typical spray bar nitrous plates are built on 30 year old technology and suffer from design compromises that can result in less than optimal performance and reliability. But ZEX™ has created three advanced nitrous technologies, each of which gives the user significant power advantages over conventional plate systems. And now ZEX™ has a complete, race ready perimeter plate system for LSX applications that is compatible with both cable and throttle-by-wire engines and is a direct fit for the new FAST™ LS_R™/LS_{RT}™ 102mm Intake Manifolds. Adjustable from 75 to 300 hp, the system provides optimum spray efficiency and fuel distribution with nitrous and fuel outlets placed at 12 injection points around the perimeter of the intake manifold's inlet.

- Activated at wide-open throttle using ZEX™ patented electronic TPS switch
- Cryo-Sync™ Technology cools throttle body while nitrous sprays, thus creating a cooler air charge and greater horsepower
- Airflow enhancement technology creates pocket of intense low pressure just behind throttle body as nitrous is being sprayed that enhances airflow into engine for greater hp
- Included adapter ring allows plate to fit all 90mm and larger, "4-bolt" style OEM and aftermarket throttle body/manifold combinations



Part #	Description
82195	LSX Perimeter Plate Nitrous System

2010 V6/V8 CAMARO NITROUS SYSTEMS

With the release of the 2010 Chevy Camaro, ZEX™ engineers have custom designed two nitrous systems specifically tailored to the Gen V Camaro's engine, one for the V6 and another for the V8. The V6 kit offers a 55-100 hp upgrade while the V8 version adds 75-175 additional horsepower. Each kit is designed to have an easy installation, and Active Fuel Control™ adjusts fuel delivery with changes in bottle pressure to operate at a safe air/fuel ratio. The easy-to-install ZEX™ systems are available in both the classic purple or the new Blackout™ series with its black powder coated bottle and all necessary accessories for a simple, two hour installation. With all the extra torque and horsepower, it's not uncommon to see over one second quicker e.t.s in the quarter mile.

- V6 kit adjustable from 55-100 additional horsepower
- V8 kit adjustable from 75-175 additional horsepower
- Active Fuel Control™ adjusts fuel delivery with changes in nitrous bottle pressure

Part #	Description
82367	2010 Gen V V6 Camaro Nitrous System
82367B	2010 Gen V V6 Camaro Blackout Nitrous System™
82380	2010 Gen V V8 Camaro Nitrous System
82380B	2010 Gen V V8 Camaro Blackout Nitrous System™



DUAL NOZZLE EFI NITROUS SYSTEM

Nitrous is one of the easiest ways to add race winning horsepower to your engine, but enthusiasts with vehicles equipped with dual throttle body engines often had to fight with making universal type kits fit and perform well. ZEX™ has solved this problem by developing an innovative wet nitrous system designed specifically for any dual throttle body EFI engine. Two nozzles, dual feed lines, all required hoses, wires and fittings have been engineered and manufactured for a perfect fit on any dual throttle body engine. You won't find a more powerful or easy-to-install nitrous system on the market.

- Designed specifically for dual throttle body equipped engines
- Adjustable from 75 to 175 hp; perfect for mild to wild performance
- ZEX™ Active Fuel Control™ adjusts fuel enrichment with variations in bottle pressure; you're never too rich or too lean
- ZEX™ electronics use the vehicle's TPS sensor to activate the nitrous system at wide open throttle; fully compatible with throttle-by-wire engines



Part #	Description
82194	Dual Nozzle EFI Nitrous System