



INSTRUCTIONS

Solid State Relay, 20 Amp PN 307043

Thank you for choosing FAST™ products; we are proud to be your manufacturer of choice. Please read this instruction sheet carefully before beginning installation, and also take a moment to review the included limited warranty information. Contact us toll free at 1.877.334.8355 or at www.fuelairspark.com under Tech Help with any questions.

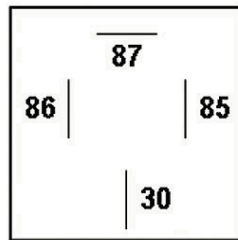
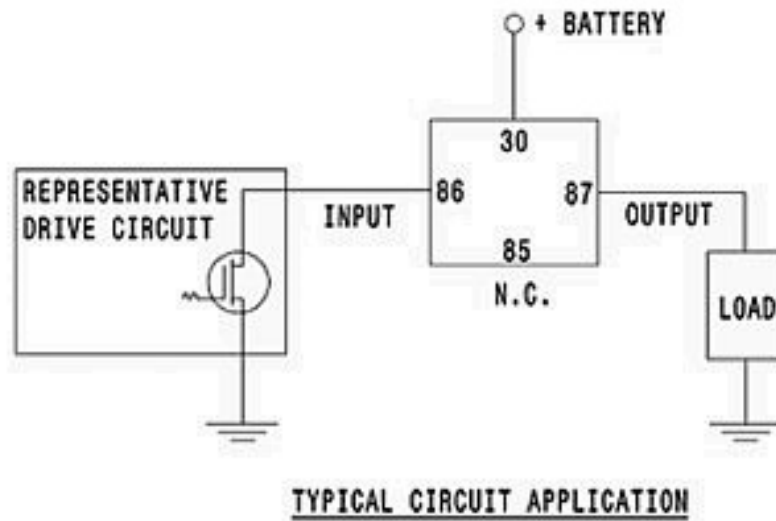


QTY	PART#	DESCRIPTION
1	307043-RELAY	Solid State Relay
1	307043-SCKT	Relay Socket
4	307043-TERM	Relay Socket Terminal
1	307043-LOCK	Relay Socket Lock

Wiring

Even though this solid state relay has the same footprint / contact arrangement as a standard relay, it is not wired the same. It is activated differently than a standard relay. Familiarize yourself with the wiring diagram before integrating this relay into your wiring.

PIN	FUNCTION
30	Battery input. This is the same as a standard relay.
85	Not used.
86	Switched ground input. Grounding this pin activates the relay and passes power from the battery to the load. Because this is a solid state relay, this input can be a rapidly switching pulse width modulated type input.
87	Power output to the load – transbrake solenoid, nitrous solenoid, boost control solenoid, fuel pump, etc. This is the same as a standard relay.



Relay bottom view / Socket wire side view

Socket Assembly

1. Strip insulation from wires.
2. Crimp terminals to wires.
3. Insert terminals into socket.
4. Slide lock into the front of the socket to prevent terminals from backing out.

Social Media

Stay up-to-date with the latest FAST™ and COMP Performance Group™ company and product information by following us on any of our social media platforms.



FAST™ LIMITED LIFETIME WARRANTY AND LIMITED WARRANTY

FAST™ warrants that its EZ-EFI™ products are free from defects in material and workmanship for the lifetime of the product. This **Limited Lifetime Warranty** shall cover **only** the original purchaser. All other FAST™ products are covered by a **Limited Warranty** which covers defects in material and workmanship for a period of **one year** from the date of purchase.

FAST's obligation under this warranty is limited to the repair or replacement of its product. To make a warranty claim, the part must be returned directly to FAST™ at the address listed below with a valid Return Merchant Authorization Number (RMA), freight prepaid. Items covered under warranty will be returned to you freight collect. To obtain an RMA, call 877-334-8355 to report the issue you are experiencing. At that time, FAST™ will attempt to trouble shoot your issue.

It is the responsibility of the installer to ensure that all of the components are correct before installation. We assume no liability for any errors made in tolerances, component selection or installation.

There is absolutely no warranty on the following:

- A. Any parts used in racing applications or subject to excessive wear;**
- B. Any product used in marine applications, unless that product is listed by FAST™ as a specific marine product;**
- C. Any product that has been physically altered improperly installed or maintained;**
- D. Any product used in improper applications, abused, or not used in conjunction with the proper parts.**

There are no implied warranties of merchantability or fitness for a particular purpose. There are no warranties which extend beyond the description of the face hereof. **FAST™ will not be responsible for incidental and consequential damages, property damage or personal injury damages.** Where required by law, implied warranties or merchantability and fitness are limited to terms outline above.

This warranty gives you specific legal rights and you may also have other legal rights which vary from state to state.